

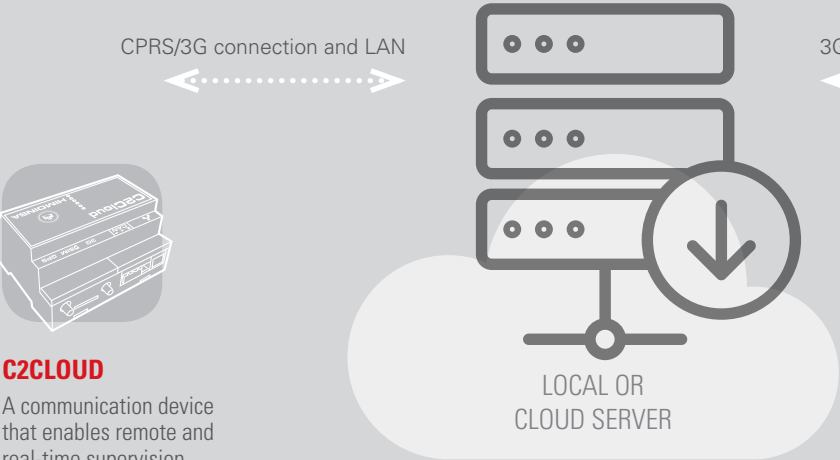
FLEET MANAGER

CONFIGURATION AND
MONITORING OF GENERATOR SETS
REMOTELY AND IN REAL TIME



HIMOINSA

DATA
TRANSMISSION



C2CLOUD
A communication device that enables remote and real-time supervision and monitoring of one or several generator set control units.
The system is ready to send pre-programmed or configurable warnings.
The genset transmits information every 60 minutes to the server, or whenever an event occurs.



MANAGEMENT
AND MONITORING

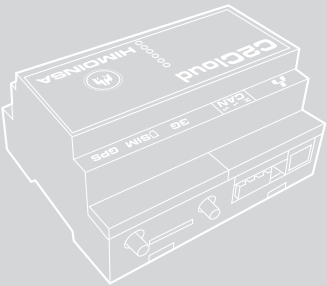


MOBILE ACCESS
MANAGEMENT USING A CELL PHONE OVER THE INTERNET OR BY SMS.
The program allows you to set up 10 different telephone numbers with notification and/or control permissions.
Using a cell phone, it is possible to start or stop the machine or even to change its operating mode. It is also possible to read or write the configuration parameters (CE7 control units only).

PC ACCESS
MANAGEMENT FROM ANY PC
Know the status and geo-positioning of the gensets and manage their maintenance. The only requirement is that the PC has to have Windows and it has to be connected to the Internet. The software provides updates on pre-programmed events and/or alarms; it features anti-theft devices and it allows you to control the unit remotely.

HG MANAGER

C2CLOUD
COMMUNICATIONS
DEVICE



C2CLOUD ALLOWS YOU TO SUPERVISE AND CONTROL ONE OR SEVERAL HIMOINSA OR DSE CONTROL UNITS VIA 3G OR ETHERNET.

FUNCTIONALITIES:

- Up to 250 events can be stored in the control unit.
- Control units connected directly with PC applications (CE7 Genset Workbench and DSE Configuration Suite) through the HG Manager server.
- Remote updating of control unit firmware (CE7 and DSE).
- The device can be configured through a WEB server.

LOW CONSUMPTION MODE (HG MANAGER ANTI-THEFT SYSTEM)

- Estimated 94% reduction in the consumption of the device. A message is programmed to be sent every hour.
- The GPS position is sent regularly in low consumption mode, and when any movement of the genset is detected.

ALERT VIA SMS AND EMAIL:

- An email is sent containing the information of any event in the generator set or a C2CLOUD input activation.
- Information on the status of the generator set.
- Geo-localization and anti-theft system by GPS.
- Remote control of the genset (turn on/off, activate contactors, change of mode...) - SMS only.
- Activation of C2CLOUD outputs - SMS only.
- An SMS is sent when there is an input change in C2CLOUD with configurable text.

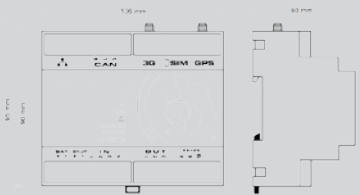
CONFIGURATION AND MONITORING OF GENERATOR SETS REMOTELY AND IN REAL TIME



GENSET WORKBENCH CONFIGURATOR
HGMANAGER ALLOWS EACH GENERATOR SET TO BE CONFIGURED REMOTELY AND IN REAL TIME.



MULTI-MANUFACTURER CONNECTIONS
Monitoring up to 15 CE7 control units by the CAN bus or 15 DSE control units by the RS-485 bus.



TECHNICAL FEATURES

- 8-36VDC power supply
- 4 digital inputs
- 3 1A digital outputs
- Connectivity by 3G and Ethernet
- GPS
- RTC clock
- CAN
- RS-485
- Accelerometer
- DIN rail
- Management by SMS

RENTAL APPLICATIONS

TELECOM APPLICATIONS



GPS LOCALIZATION.
The C2CLOUD kit uses GPS global positioning and accelerometer technology that makes it possible to locate the units and to detect any movements when the generator sets are switched off to raise the alarm in the event of a possible robbery.

OBTAIN CUSTOMIZED REPORTS

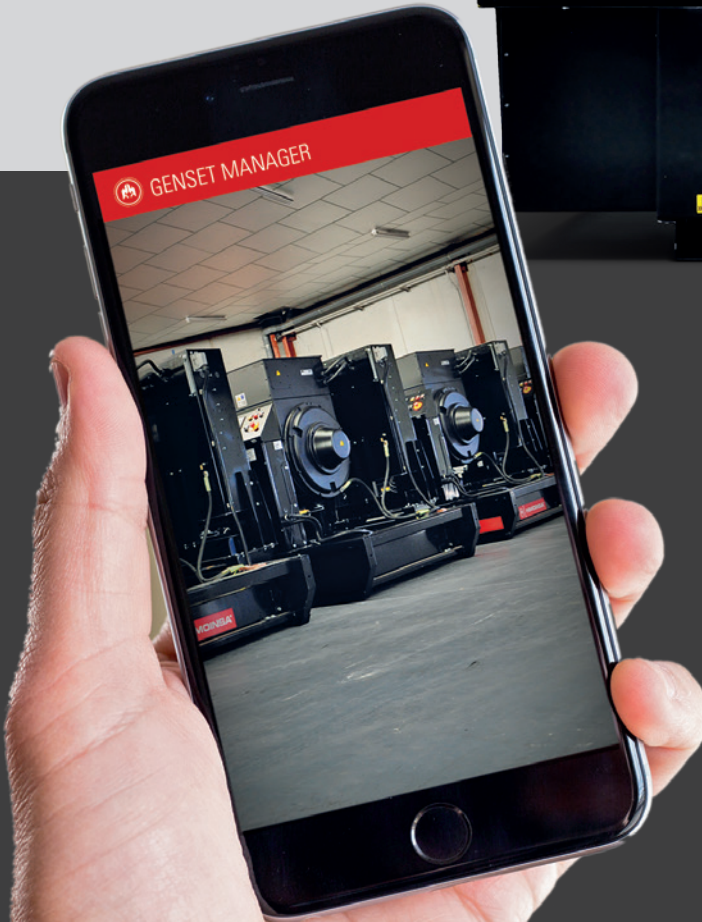
detailing the hours of operation, the energy generated, the consumption (in litres of fuel) and the performance of the gensets that make up your fleet.



HYBRID PLANT
Integral monitoring of the hybrid system: renewable energy, batteries, consumption, grid and generator set using DC or AC.

FEWER TRIPS FOR MAINTENANCE MANAGEMENT

Up to 15 generator sets with HIMOINSA or DSE control units can be monitored with just one device. This reduces site visits which translates into fewer operation and maintenance costs.



1

Accessible information



ONGOING DATA PROCESSING

Access the status of all your gensets at any time and supervise their event history.

2

Statistics



DATABASE

The data generated by the generator sets are stored in the server. Statistics are created that allow you to understand how your units are running.

3

CSV reports



REPORT GENERATION

Information exportable to compatible formats (CSV). The system allows you to create an historical record of alarms, events, maintenance, consumption..., for subsequent processing and analysis.

4

Scheduled refuelling



The GenSet Manager automatically estimates the dates on which each genset needs to be refuelled.

5

Anti-theft alerts



The HG Manager application generates an alert that machinery is being stolen and a fuel alert. The anti-theft management function makes it possible to receive an alert SMS and to pinpoint its location by GPS positioning.

6

Maintenance manager



It enumerates the different units that have been added to the management map and it helps you plan the maintenance schedule for each genset.



FACTORIES:

SPAIN • FRANCE • INDIA • CHINA • USA • BRAZIL • ARGENTINA

SUBSIDIARIES:

PORTUGAL | POLAND | GERMANY | UK

SINGAPORE | UAE | PANAMA | DOMINICAN REPUBLIC

ARGENTINA | ANGOLA | SOUTH AFRICA

HEADQUARTERS:

Ctra. Murcia - San Javier, km 23.6

30730 SAN JAVIER (Murcia) SPAIN

TLF. +34 968 19 11 28 | +34 902 19 11 28

Fax +34 968 19 12 17 | Export Fax +34 968 33 43 03



HIMOINSA